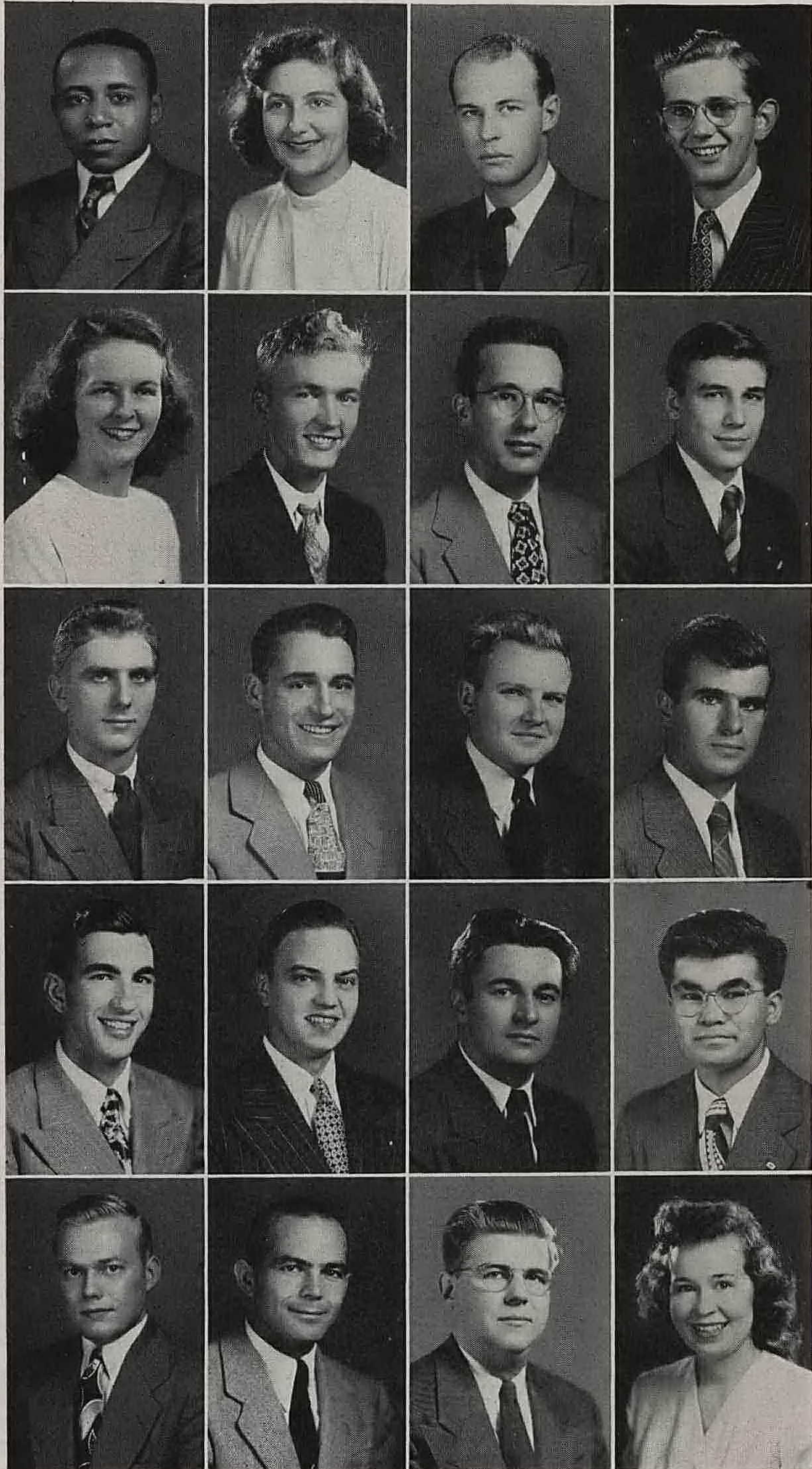




**S E N I**



ROTH, GEORGE R., M.E. . . . Fort Thomas, Ky.  
Camera Club; Union; Union Show; Football; Transfer  
from University of Virginia.

ROTHBART, ESTHER, Sci. . . . Chicago, Ill.  
Omega; Hillel Foundation; Union; W.A.A.

ROTHGEB, WAYNE P., Agr. . . . New Haven, Ind.  
Alpha Gamma Rho; Agriculturist; Cary Club; Hoof  
and Horn; Purdue Independent; Radio Guild; Sigma  
Delta Chi; Wesley Foundation; W.B.A.A.

ROYAL, JOHN G., M.F. . . . Chicago, Ill.  
Phi Kappa, A.S.M.E.; I.Ae.S.; Intramural Sports;  
Newman Club; S.A.E.; W.B.A.A.; "920" Club; Navy.

RUCKER, ARTHUR M., C.E. . . . Cortland, Ind.  
Navy; Transfer from Notre Dame, and Central Mis-  
souri State Teachers College.

RUDASICS, JAMES E., T. & I.E. . . . South Bend, Ind.  
Delta Tau Delta; Iota Lambda Sigma; Baseball; Army.

RUDD, GORDON W., Aero.E. and N.S. & T. . . .  
Opequon, Va.  
Beta Theta Pi; Cary Club; Flying Club; I.A.S.;  
S.A.E.; Navy; Transfer from Case School of Applied  
Science, and Illinois Institute of Technology.

RUDD, HELEN B., H.E. . . . Washington, D.C.  
Alpha Chi Omega; Debris; Playshop; Union; Uni-  
versity Choir. Virginia C. Meredith Club.

**O R S**

RUDDER, JOHN E., Sci. . . . Paducah, Ky.  
Exponent; Marine Corps.

→ RUDIN, BARBARA, H.E. . . . Calumet City, Ind.  
Omega; Hillel Foundation; Triton; Virginia C. Mere-  
dith Club; W.A.A.; Life Saving Corps.

RUDOLPH, RAYMOND J., Sci. . . . Crown Point, Ind.  
Phi Gamma Delta; Gimlet Club; Newman Club;  
P.A.C.; "P" Man's Club; Football, Senior Manager.

RUGGLES, WAYNE F., Sci. . . . Wheaton, Ill.  
Delta Tau Delta, Song Leader, Rush Chairman;  
Distinguished Student; Intramural Sports; Purdue  
Men's Glee Club; Student Senate; Union Show;  
University Choir; Varsity Four.

RUMFORD, GAYLE E., H.E., Indianapolis, Ind.  
Glenwood; A.W.S., Chairman, Judicial Board.

RUMPLE, HENRY I., Aero.E. . . . Bloomington, Ind.  
Lambda Chi Alpha; Intramural Sports; Transfer  
from DePauw University.

RUPAL, JAMES J., C.E. . . . Indianapolis, Ind.  
A.S.C.E.; Cary Club, Joint Councilman; Pistol Team;  
Rifle Team; Gun Club; Army.

RUSH, CARL B., M.E. . . . Mentone, Ind.  
A.S.M.E.; Camera Club; P.I.A.; Wesley Foundation;  
Army.

RUSSELL, ROBERT E., M.E. . . . Brooklyn, N. Y.  
Alpha Phi Omega; Rifle Team; Navy.

RUTAN, PAUL J., JR., M.E. . . . Swarthmore, Pa.  
A.S.M.E.; Cary Club; S.A.E.; Football; Track;  
Transfer from Bucknell Univ.

RYAN, JAMES V., Sci. . . . Woodlawn, N. Y.  
Theta Chi; Navy; Ohio State University.

RYDEN, EDWARD F., M.E. . . . Riverside, Ill.  
A.S.M.E.; Scabbard and Blade; Stamp Club; Army.

RYDER, HENRY C., Sci. . . . W. Lafayette, Ind.  
Phi Gamma Delta; Alpha Epsilon Rho; Band; Dis-  
tinguished Student; Gimlet Club, President; Military  
Ball Committee; Purdue Concert Choir, Manager;  
Purdue Men's Glee Club; Radio Guild; Scabbard and  
Blade; Skull and Crescent, Treasurer; University  
Choir; W.B.A.A., Senior Board; Card Display Section,  
Manager.

RYDER, RICHARD S., M.E. . . . Shelby, Ohio  
Phi Kappa Sigma; A.S.M.E.

SAGAN, FELIX H., M.E. . . . Warren, R. I.  
A.S.M.E.; Newman Club; P.V.A.; Purdue Men's  
Glee Club; Student Senate.

SAGATA, JURO, Aero.E. . . . San Clemente, Cal.  
Aero Modelers; Cary Club; Distinguished Student;  
I.Ae.S.; Pi Tau Sigma; Tau Beta Pi; Transfer from  
University of Southern California.

SAMPLE, NORRIS L., Ch.E. . . . Elmhurst, Ill.  
A.I.Ch.E.; Cary Club; Debate; Distinguished Student;  
Dunroamin; Intercollegiate Debating Team; Intra-  
mural Debate; Intramural Sports; Omega Chi Epsilon;  
Phi Lambda Upsilon; Reamer; Tau Beta Pi; Tau  
Kappa Alpha; Marine Corps.

SANDERCOCK, DONALD, Aero., Wind Gap, Pa.  
I.Ae.S.; Intramural Sports; P.I.A.; S.A.E.; Army.

SANDERS, ALBERT J., M.E., Lafayette, Ind.  
A.S.M.E.; Army.

SANKER, SHIRLEY J., H.E. . . . Cleveland, Ohio  
Phi Mu; University Choir; W.A.A.